

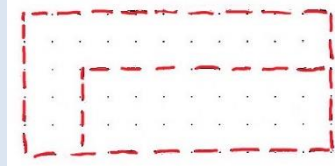


CBJ DRAWING LESSONS

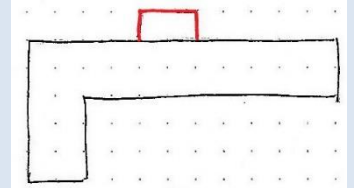
#D19-2 "Water Faucet"

DIRECTIONS: P-I-E (Pencil, Ink, Erase) First use PENCIL, Draw the Red ink in each step. Then INK all lines, ERASE Pencil. COLOR

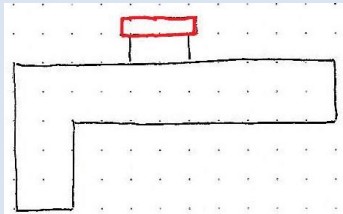
#1. In pencil, lightly make guidelines to draw a nested set of rectangles. The outer box is 11 units wide and 5 units high. The inner box is 9 units wide and 3 units high. They share the lower, right corner.



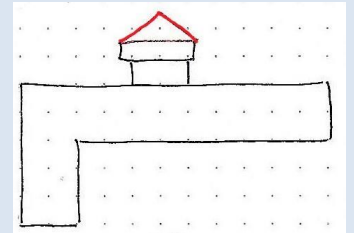
#2. Four units from the left top draw a box 2 units wide and 1 unit high.



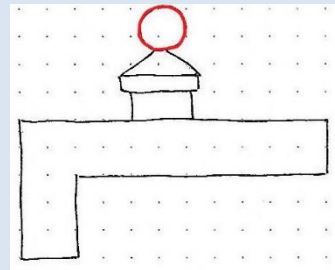
#3. On the top of the protruding box, center another box that is 1/2 unit high and 2 1/2 units wide.



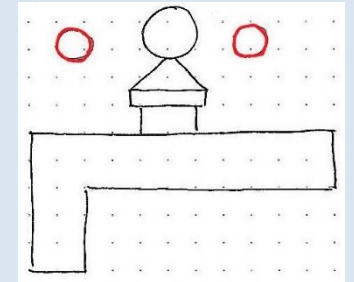
#4. Center a triangle that is 1 1/2 units high and whose sides meet the top corners of the box.



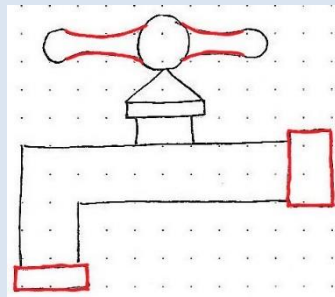
#5. Add a 1 1/2 diameter circle on top of the triangle.



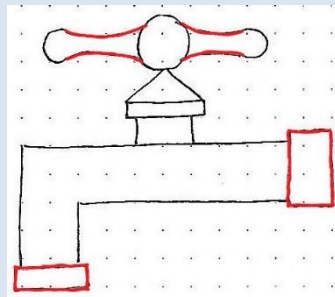
#6. On each side of the first circle, add a 1-unit diameter circle whose inside edge is 1 1/2 units away. They should be in line across their horizontal centers.



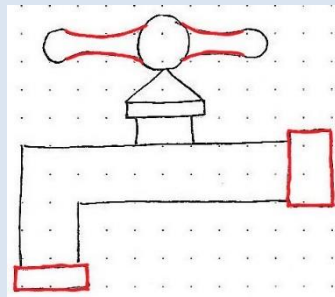
#7. Connect the circles on each side with concave lines.



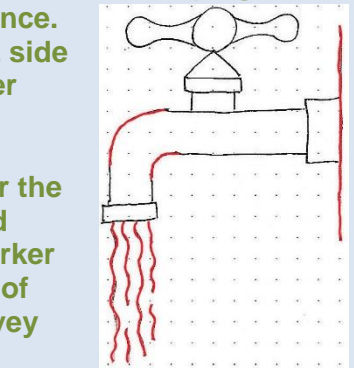
#8. Center a box on the right side that is 1 1/4 units wide and 2 1/2 units high.



#9. Center a box on the bottom left that is 1 unit high and 2 1/4 units wide.



#10. Curve the corner on the left, keeping the two lines at equal distance. Add a 'wall' to the right side and wavy lines for water under the spigot.



#11. Erase pencil. Color the water blue, wall tan and faucet gray. Using a darker shade near the bottom of faucet shapes will convey roundness.