

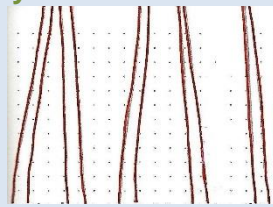


CBJ DRAWING LESSONS

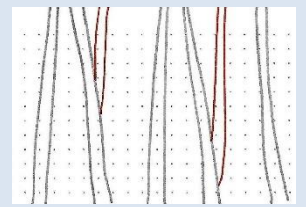
#D19-44 "Birch Trees"

DIRECTIONS: P-I-E (Pencil, Ink, Erase) First use PENCIL, Draw the Red ink in each step. Then INK all lines, ERASE Pencil. COLOR

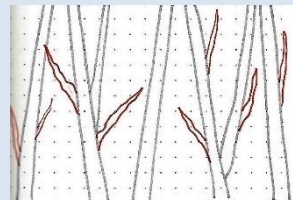
#1. This tutorial is much more 'free-form' than those in the past. In the space you want to fill with trees, draw a spaced-out series of double lines. They will be slightly wider at the bottom than the top and will lean slightly in different directions.



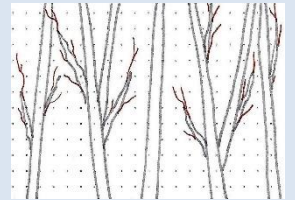
#2. Select a couple of trees to be split-trunk. Angle a second trunk at a narrow V from the original.



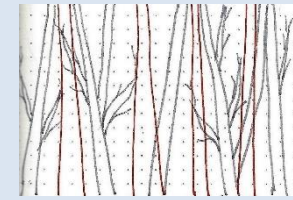
#3. In some of the open spaces, create branches. Don't make a lot and don't make them overly long. They will attach to the trunk wider and narrow to a point.



#4. From the ends and sides of the branches, extend a few twigs. Be judicious, you want to maintain open space.



#5. In the open spaces, add some trees that are ever-so-slightly thicker than the existing ones.



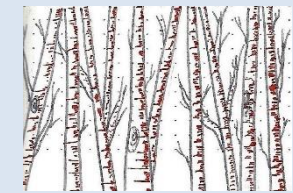
#6. Erase the former trees where they fall inside these new trunks. This places the newer trees in the foreground.

#7. Add twigs on the sides of trunks throughout.



#8. On a few trunks, add swirls to indicate knots.

#9. From the right side of ALL trunks, add partial hashmarks to indicate the distinctive birch bark pattern.



#10. Trace trees with ink and erase pencil. Coloring should be with very light tones of cream, tan or brown.

#11. This process works on a horizontal or a vertical format.



©www.Creative-Bible-Journaling.com 2019
Illustrated by Debbie Dodd
Designed by Debbie Dodd 2019

YOUTUBE: CREATIVE BIBLE JOURNALING * INSTAGRAM: @CREATIVE.BIBLE.JOURNALING * PINTEREST: CREATIVE BIBLE JOURNALING

FACEBOOK GROUP: CBJ COMMUNITY ~CREATIVE BIBLE JOURNALING * WWW.CREATIVE-BIBLE-JOURNALING.COM