

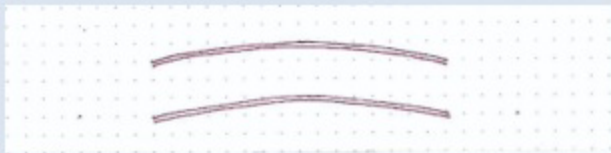
Directions

Starting with Pencil, Draw the RED Ink in Each Step. Then Ink All Lines. Erase Pencil. Color.

#1. In pencil, make dots on a grid that follow the guides below. There will be 8 dots.



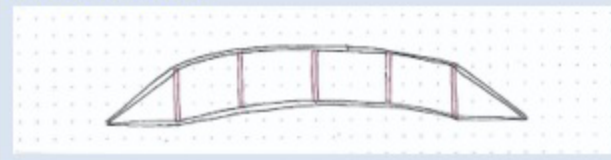
#2. Use a gentle curve to connect the top three dots and the center three bottom dots with double lines.



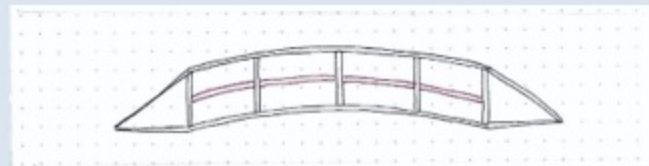
#3. Use double lines to connect the top bar and the bottom bar with the outer corner dots.



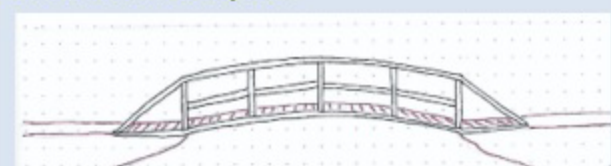
#4. Create double lined uprights at the center, at each end of the arch and halfway along each side of the arch.



#5. Add a double-lined arch through the center.



#6. Add 'floor' to the bridge and extend it into a path on each end. Add some land mass on either side of the path.



#7. Ink and erase pencil. Color. Add bridge reflection and trees.

