



# CBJ Elements



## CLIP ART ELEMENTS FOR NAHUM

**DIRECTIONS:** Print & Cut for Bible Journaling & Crafting.

**TO CHANGE SIZE:** Reduce or Enlarge in Printing Preferences of your printer.

**TIP-IN:** Color, cut, adhere to one edge of bible or the gutter, with glue or tape runner

**TRACE-IN:** Place this paper between Bible Page and Tracing Light Pad, Trace and Color.

**THINK OUTSIDE THE BOX:** Be creative and use these elements in new & exciting ways!



Print Them

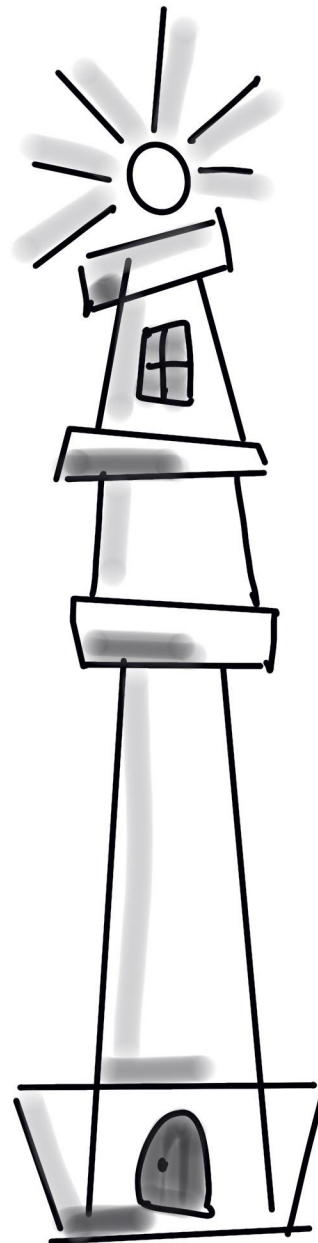
Trace Them

Tip Them

Use Them

Think Outside the Box

While this artwork is free for personal use... If you post outside of CBJ, please credit our CBJ artist, Jackie Mattingly, 2019



No Matter  
**WHO**  
is  
President



**CHRIST**

Is  
King



Alter these Element Clip art to make it fit you.

The Wonky House Light Tower can be used in many places, in many Books, Including as general illustration next to Nahum Chapter !